



Uniwatcher

Admissions Made Easy

What is Uniwatcher?

- Innovative management platform for educational agencies.
- Streamlines student admissions, applications, and placements in higher studies.
- Comprehensive solution for managing offices, staff, institutions, and partners.
- Offers reporting features for data analysis and insights.





Who can use Uniwatcher?

- Educational consultancies and institutions supporting students with higher education applications.

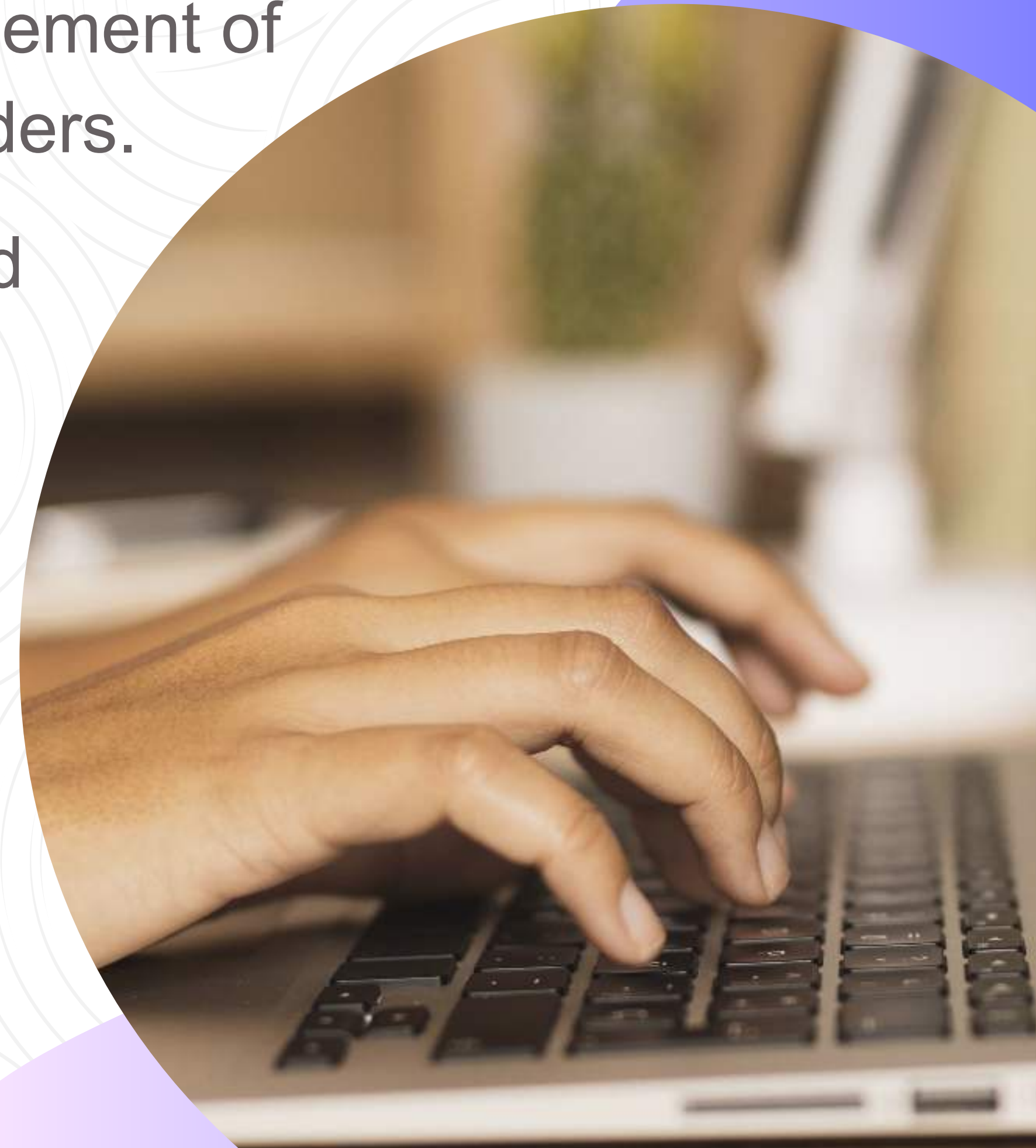
User roles of Uniwatcher



- **Director:** Complete access to CRM, including offices, staff, institutions, and partners.
- **Manager:** Manages specific office-related information.
- **Counsellors:** Handle student profiles and applications within offices.
- **Student:** Upload documents and view applications.
- **Partners:** Collaborate with the agency and have their own login credentials.

Modules of Uniwatcher

- **Dashboard:** Provides an overview of data based on user roles.
- **Student Modules:** Allows creation, editing, and management of student profiles. Supports bulk uploads and task reminders.
- **Report Modules:** Offers various reports on student and staff information, with customizable filters.
- **Institution Modules:** Manages institution profiles and information.
- **Manage Office/Staff Modules:** Helps in creating and managing offices and staff members.
- **Partner Modules:** Focuses on partner creation, management, and reporting.



Benefits of Uniwatcher



- **Efficiency:** Centralizes and automates admission management tasks.
- **Accuracy:** Minimizes errors in data and reports.
- **Scalability:** Suits agencies of all sizes.
- **Competitive Edge:** Offers advanced functionalities.
- **Time-Saving:** Automates manual tasks, saving staff time.
- **Cost Reduction:** Streamlines processes, reducing paperwork.

ROI for Uniwatcher

- Uniwatcher reduces costs, saves time, and enhances efficiency.
- Provides data-driven insights for optimization and strategic planning.
- Offers significant workload reduction compared to traditional systems, resulting in an ROI ratio of 1:10.



Conclusion:

- Uniwatcher revolutionizes educational agency management, enhancing efficiency, accuracy, and client satisfaction.
- Empowers agencies to excel in a competitive industry while simplifying student admissions.

How to get in touch with us?


Visit our website

 www.uniwatcher.com

Email us

 info@uniwatcher.com

Phone

 0333 998 1288